

MONTREAL™ WITH DENVER F6 720MM / 920MM / 1120MM

Using the CEVB (Controlled Ethanol Vapour Burning) technology, Decoflame has created Montreal with the Denver F6 burner, an automatic burner with built-in casing.

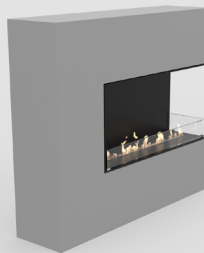
Featuring the e-Ribbon Fire™ burning system, it is suitable where safety and ease operation are in focus.

Montreal can also be ordered with the following burners:

- A. Denver F3 Burner
- B. Hybrid Mist
- C. Manual Burner



Open to front



Open to front and right side



Open to front and left side



Open to front and back



Open to front, back and right

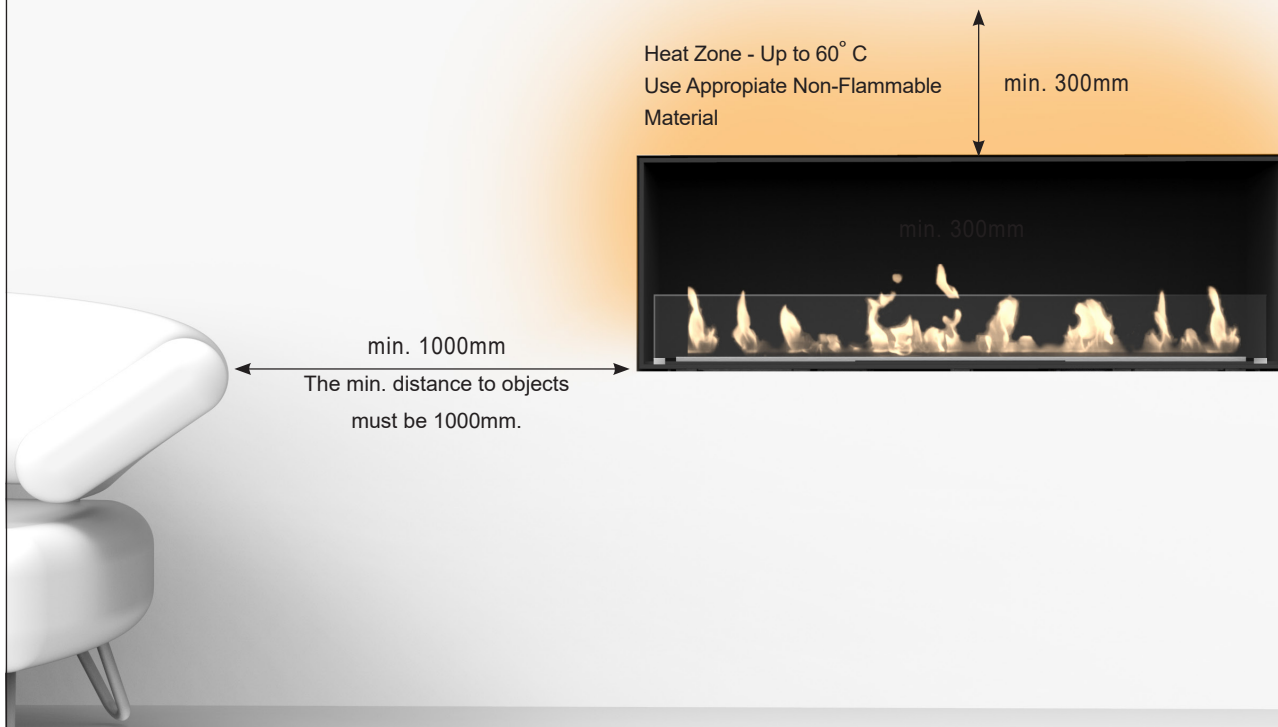


Open to front, back and left



Open to front, right and left

Heat-Zone



Location under TV-screen

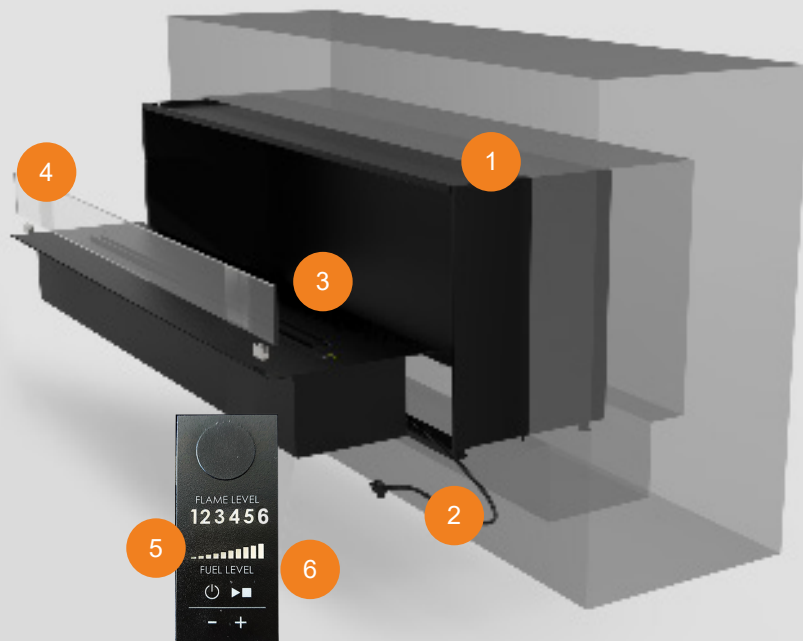
It is NOT recommended to place TV-screens or valuable paintings over the fireplace as the rising hot air can damage the materials.

If you decide to use a construction containing a TV-screen over the bio fireplace, the following instructions must be followed, otherwise please consult your retailer or Decoflame.



It is imperative to follow the indications in the User's Manual concerning the installation of decorative or electronic items above the fireplace.

INSTALLATION





Step 1: Make sure that the dimensions of the cut-out correspond to the measurements indicated in the technical drawing received with your fireplace. *Everything must be in level.*

Step 2: Connect the fireplace to an electrical power supply.

Step 3: Recess the fireplace into the wall cut-out according to the indications in the User's Manual.

Step 4: Place the glass screen/s on to the top pin holders.

Step 5: Turn on  the fireplace. Fill in the right amount of bioethanol by verifying the level on the indicator.

Step 6: Start the fireplace by pressing the Play/Start  button on the control panel.

Wait around 3 minutes before the fireplace is fully operational.

Enjoy your fire.

Features

- e-Ribbon™ technology
- Safety sensors / Safety chamber
- Fuel Level Indicator / Flame Level Indicator
- Remote control included
- External Pump included
- Bluetooth / App
- 6 flame levels
- 8mm aluminium casing and baseplate
- No chimney required - no smoke, ash or soot
- Safety chamber
- Glass screen ordered (Full and/or low glasses)

Optional

- Made to measure
- Brushed and brushed stainless steel
- RAL colours

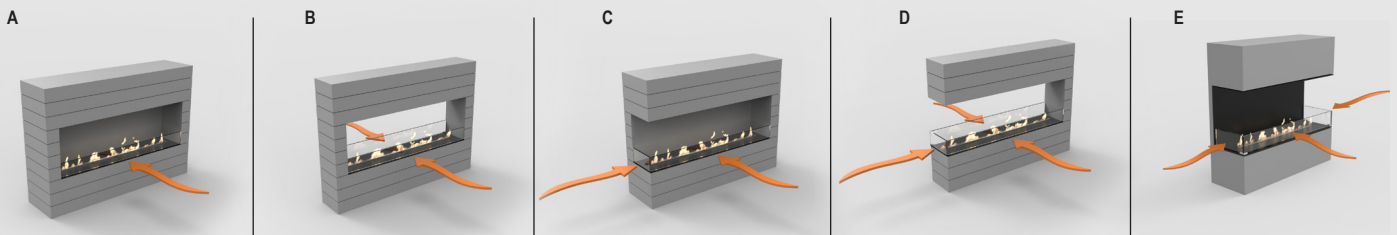
Standard finishes



Optional



Glass shield



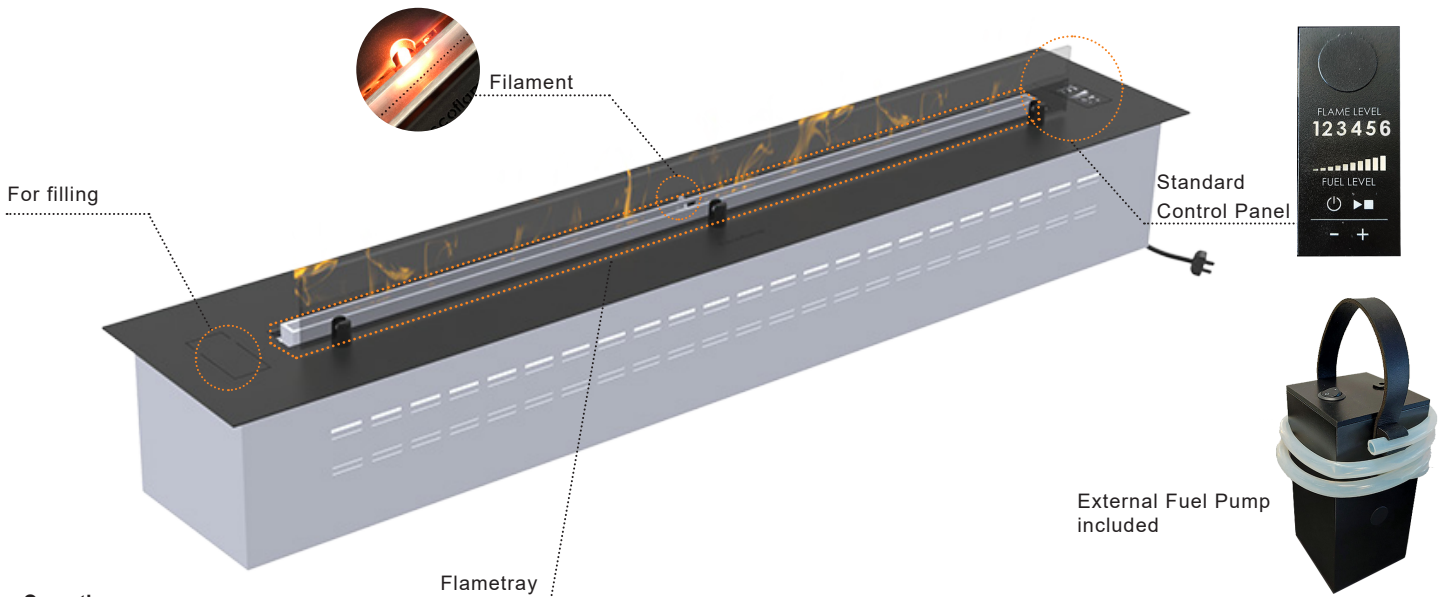
Decoflame strongly recommends installing glass shields in order to protect the flame from draught, while keeping it vivid.

Model A comes with one low glass.

Model B comes with either two low glasses or one full glass and one low glass.

Model C - E can be ordered with low glass. We recommend it as illustrated for the best result regarding design and operation.

DENVER F6 BURNER



Operating:

Step 1	Turn on the electronics of your Denver F6™ by pressing the button.
Step 2	Fill in the right amount of bioethanol in the fuel tank by verifying the level on the fuel level indicator.
Step 3	To ignite the fireplace: Press the button on the control panel. After about 3 minutes, the first flames will appear around the centre of the flame tray.
Step 4	When the filament no longer is red/glows (approx. 10 min) it is possible to adjust the flames.
Step 5	To switch off the fire at any time – also during the warming-up phase – press the button on the control panel. The flames will disappear within few minutes.



Use the supplied remote control or download the Decoflame App to your mobile device for controlling the biofireplace.

Installation of Decoflame App to the Denver F6 burner

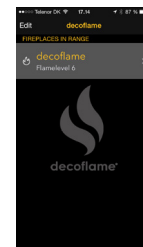


App Store



Google play

Model:	Denver Basic 720 - black	
Dimensions:	720x215x125mm - Flame Tray 500	
Power Supply:	220/240V - 50Hz must be earthed	
Serial Number:	72000.05.16.V1.001	
Thermal Output:	max 2.9 kW	
Fuel Type:	bioethanol 96%	
Room Volume:	min. 58 m ³	
Radio Frequency:	433.92 MHz	
Bluetooth Code:	0001	
Manufacturer:	Decoflame ApS - Made in Denmark	



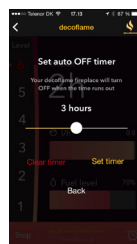
1. Download and install the Decoflame App corresponding to your smart device's operating system. For more information go to: decoflame.com.

2. In order to pair your fireplace with your smart device, start the fireplace by pressing the 'ON' button. Start the App and choose your fireplace. Insert the code from YOUR rating plate, like the one highlighted above.

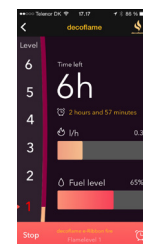
3. Once your device is paired, the fireplace should be visible on the app. You are now able to change the name of the fireplace. **Note:** You are able to pair more than one fireplace like described in the step nr. 2 and give them different names.



4. Once you have selected your fireplace, you can turn it on by pressing 'START'. If the fireplace has already been turned on using the control panel, you can now monitor the fuel level and the consumption.



5. For the 'Turn Off Timer' press the clock icon in the lower right corner. To adjust the remaining time, slide the dot to the left and right and select 'SET TIMER'. The remaining burning time can be changed by repeating the above mentioned steps. To cancel the timer select 'CLEAR TIMER'.



6. For adjusting the flame intensity, select the desired level on the left side of the screen. (1-lowest, 5+ECO Wave or 6-highest depending on the model chosen). Should there not be enough fuel for the selected burning time - the fireplace will shut down automatically. Select 'STOP' to turn off the fireplace.